

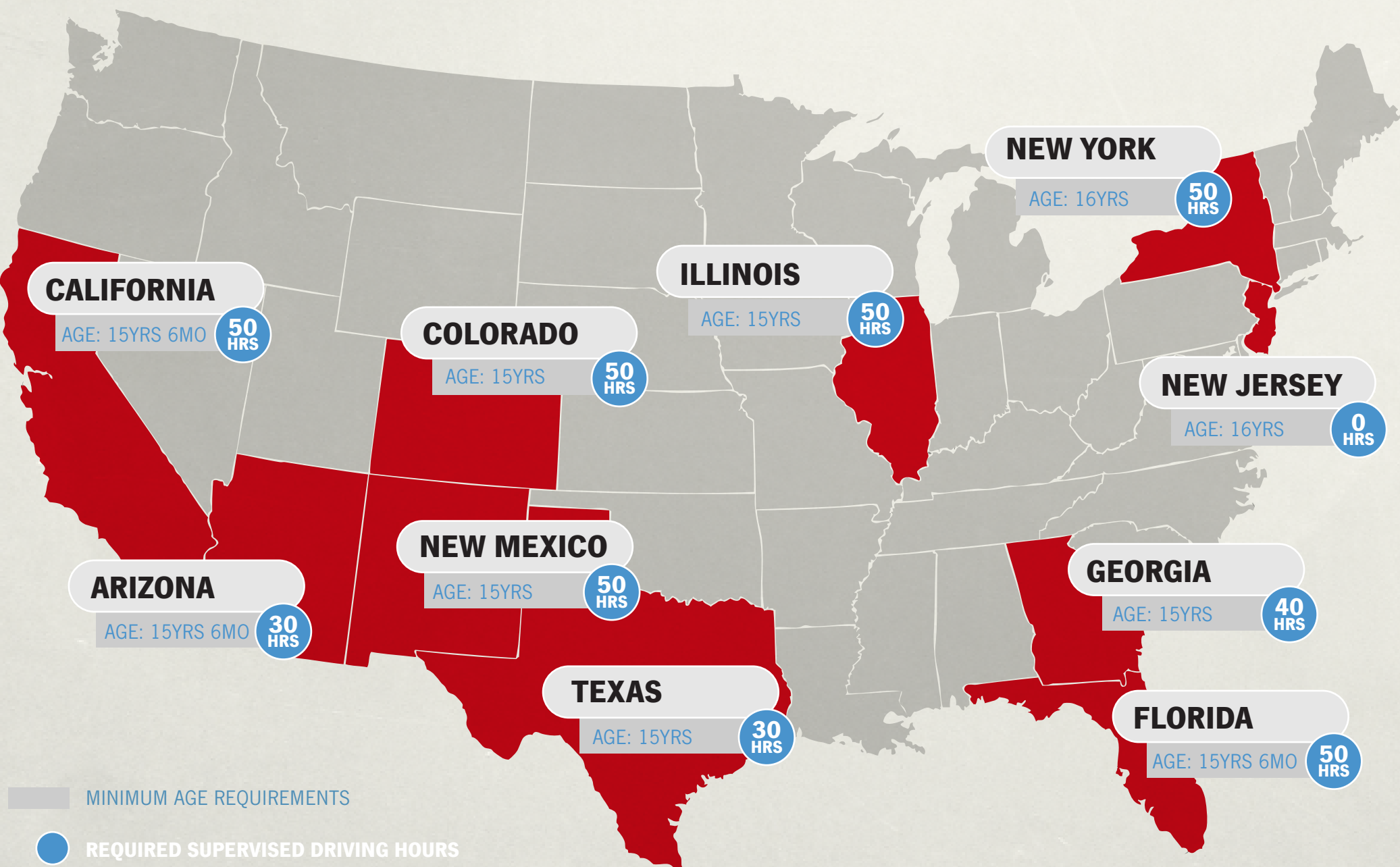
# PARENTS CAN BE ROLE MODELS

## FOR TEEN DRIVERS TO FOLLOW GDL LAWS

STATE FARM® SURVEY REVEALS AN ALARMING GAP BETWEEN PARENTS' AND TEENS' VIEWS ON GRADUATED DRIVER LICENSING (GDL) LAWS

### HOW DO STATES DIFFER?

GDL\* LAWS FROM STATES WITH HIGH HISPANIC POPULATION\*\*



\*GDL laws are an experience-based method for beginning drivers in which driving privileges are introduced in phases.  
 \*\*Population data for states with high Hispanic population comes from U.S. Census Report. ([www.census.gov](http://www.census.gov))  
 GDL laws by state is reported by the Governors Highway Safety Association ([www.ghsa.org](http://www.ghsa.org))

### PARENTS OVERESTIMATE HOW MUCH TEENS OBEY A KEY PROVISION OF GDL LAWS

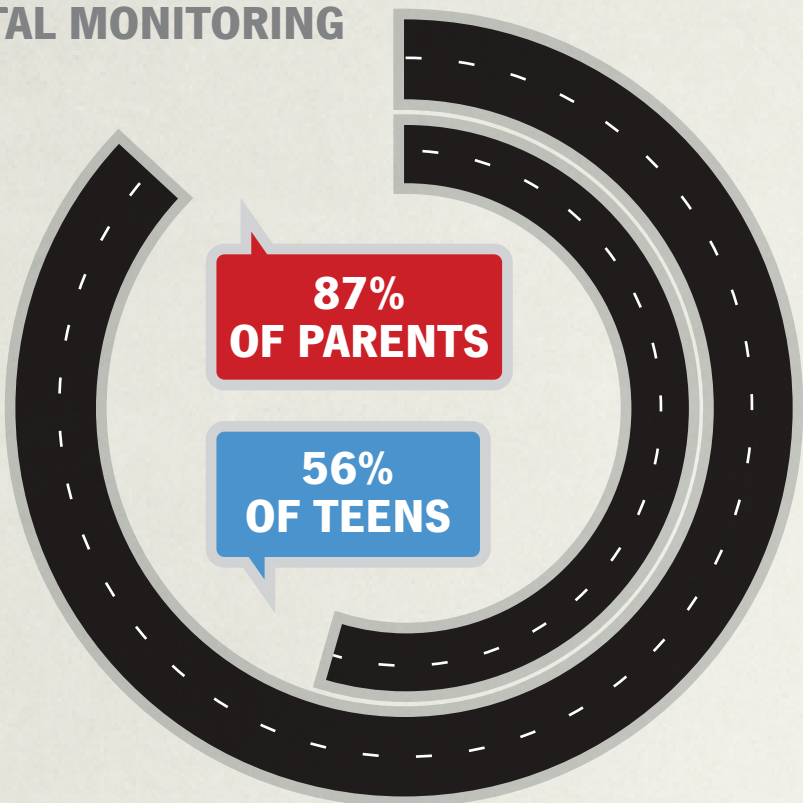


### TEENS AND PARENTS HAVE DIFFERENT BELIEFS ABOUT WHY TEENS DO OR DO NOT OBEY GDL LAWS

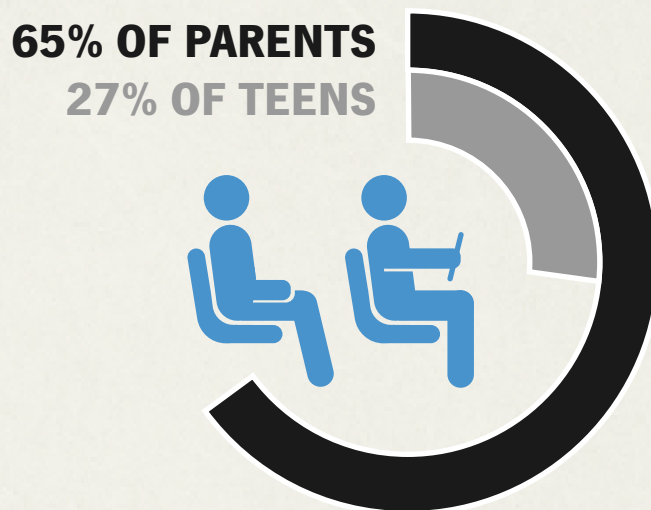


### PARENTS WERE SIGNIFICANTLY MORE LIKELY TO REPORT THEY ALMOST ALWAYS MONITOR WHETHER THEIR TEEN OBEYS THE GDL LAWS COMPARED TO WHAT TEENS REPORTED

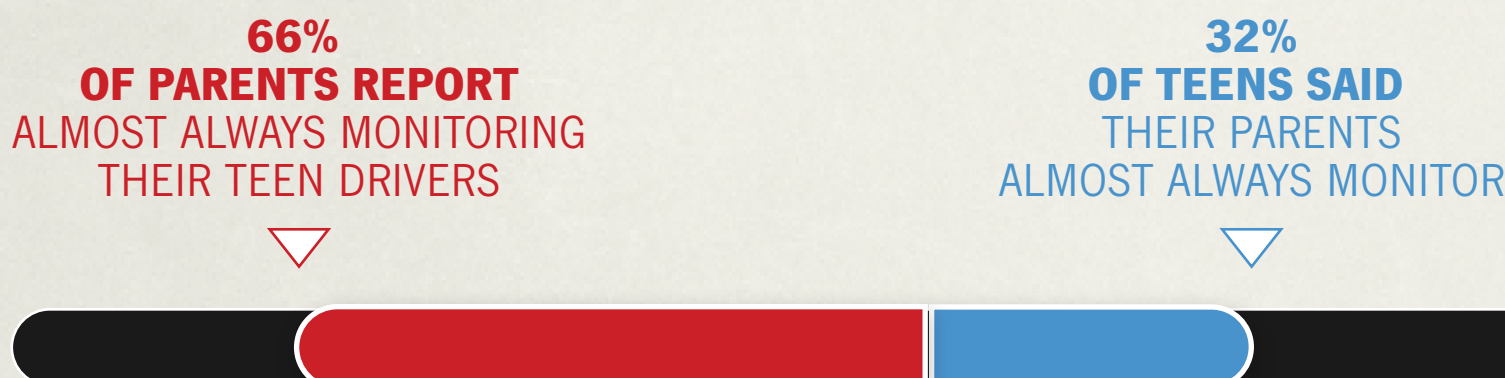
PARENTS WERE SIGNIFICANTLY MORE LIKELY THAN TEENS TO STATE TEENS WILL OBEY DRIVING RESTRICTIONS DUE TO PARENTAL MONITORING



MAJORITY OF PARENTS SAID THEY ALMOST ALWAYS MONITOR WHETHER TEENS FOLLOW PASSENGER RESTRICTIONS



ARE PARENTS MONITORING THEIR TEENS FOR NIGHTTIME DRIVING RESTRICTIONS? IT DEPENDS ON WHO YOU ASK...



**TEENS WITH INVOLVED AND SUPPORTIVE PARENTS ARE HALF AS LIKELY TO BE IN A CRASH.** LET STATE FARM HELP YOU GET INVOLVED IN YOUR TEEN'S DRIVING BY VISITING [HTTP://TEENDRIVING.STATEFARM.COM](http://TEENDRIVING.STATEFARM.COM)

IN JUNE 2013, THE STATE FARM® STRATEGIC RESOURCES DEPARTMENT CONDUCTED AN ONLINE SURVEY TO EXAMINE TEEN DRIVERS' AND PARENTS' VIEWS ON GRADUATED DRIVER LICENSING (GDL) LAWS. STATE FARM SURVEYED A SAMPLE OF 500 PARENTS OF TEEN DRIVERS AND AN INDEPENDENT SAMPLE OF 500 TEEN DRIVERS.

